



# Nut Free and Natural Ingredient Statement

March 14, 2025

To Our Valued Customers,

We at Rich's Ice Cream are dedicated to safe quality products and feel confident that our allergen programs represent the best industry practices. We are also committed to using safer, more wholesome ingredients in our products, as a commitment to quality for our consumers.

## **100% peanut free and tree nut free facility.**

Protocols which allow us to maintain this environment include:

- We do not allow peanuts, or tree nuts anywhere on site at our facility. This includes everything from the ingredients we buy to the snacks stocked in the vending machines, to employee lunches.
- We employ a strict Allergen Control Program. Not only for nuts, but this program also includes cleaning and sanitizing the facility and production lines daily and using microbial and allergen swabs to verify that the equipment is completely "allergen free" prior to use.
- We require that all ingredient suppliers undergo and pass an annual, independent, third-party audit of their facility to ensure they are complying with the Global Food Safety Initiative standards (to include strict allergen programs). This inspection process is one of the most comprehensive and respected food safety standards in the world.

## **No artificial dyes**

- We use natural colorings for our products that include Turmeric (yellow), Spirulina extract (Blue), Beet Juice Extract (Red), and Annatto and Turmeric extract blend (orange)
- We never use FD&C colors such as Red Dye #40 or #3, Yellow #5 or #6, or Blue #1, like many of our competitors use.

## **Natural Sugars**

- For Sucrose, only cane sugar is used, sourced from local Florida farms
- No High Fructose Corn Syrup
- No artificial sweeteners

## **Whole Grain Crunch Bars**

- The Whole Grain Crunch used on the ice cream bars is made with over 51% whole grains.

If you or a family member have nut food allergies, consider them safe when they enjoy Rich's Ice Cream.

From our family to yours,

Rich Ice Cream Co.

*Michael J. Melville*

Mike Melville

Vice President of Continuous Improvement and Quality

Date of signature: 03/14/2025



# Rich's Frozen Dessert Allergen List

Category	Item	Milk	Soy	Wheat	Gluten	Peanut	Tree Nuts	Sesame	Shellfish	Egg	Fish
Stick Novelties	Strawberry Shortcake	✓	✓	✓	✓						
	Chocolate Crunch Cake	✓	✓	✓	✓						
	Rich Bar	✓	✓								
	Crumbled Cookie Bar	✓	✓	✓	✓						
	Orange Cream bar	✓									
	Fudge Frenzy	✓									
	Cotton Candy Twirl										
	Savagely Sour Cherry										
	Savagely Sour Blue Raspberry										
	Cool Watermelon										
Cones	Crumbled Cookie Cone	✓	✓	✓	✓						
	Birthday Cake Cone	✓	✓	✓	✓						
Sandwiches	Grande Vanilla Sandwich	✓	✓	✓	✓						
	Low Fat Vanilla Sandwich 3oz	✓	✓	✓	✓						
Cyclones	Sour Cyclone	✓									
3oz Cups	Vanilla Cup	✓									
	Vanilla-Chocolate Cup	✓									
10oz Cups	Cookies and Cream Avalanche	✓	✓	✓	✓						
Squeeze ups	Cherry Polar Pole	✓									

Items with a check mark (✓) contain the items in the column header.

Last updated: 03/14/2025



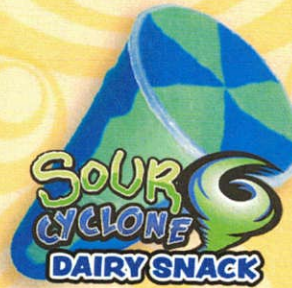
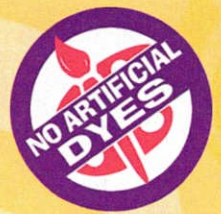
**Safer, Smarter  
Snacking**







# Smart Snacks in School



## Non-Dairy Items



Velvet Ice Cream  
800-589-5000



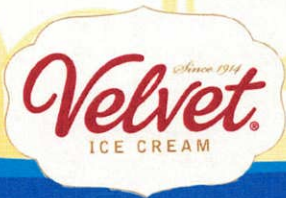


If the package says...



# Smart Facts for Smart Snacks

Product	Size Weight	Calories	Total Fat	Fat Cal %	Sat. Fat	Sat. Fat Calorie%	Trans Fat	Sodium	Sugar	Sugar % by weight	Carbs	
		< 200		< 30 %		< 10 %	0g	<200mg		< 35 %		
 LF Vanilla Sandwich	4 fl oz 65 g	150	3 g	4%	1.5 g	8%	0 g	150 mg	14 g	30%	28 g	
 LF Cookie and Cream Sandwich	4 fl oz 65g	160	3 g	4%	1.5 g	8.0%	0 g	150 mg	13 g	28%	31 g	
 Strawberry Shortcake	3 fl oz 70 g	140	5 g	32%	1.5 g	10%	0 g	50 mg	12 g	17%	23 g	
 Chocolate Crunch Cake	3 fl oz 70 g	150	5 g	30%	1.5 g	9.0%	0 g	55 mg	13 g	19%	23 g	
 Crumbled Cookie Bar	3 fl oz 70 g	150	5 g	30%	1.5 g	9%	0 g	55 mg	13 g	19%	23 g	
 Crumbled Cookie Cone	4 fl oz 65 g	140	1.5 g	15%	1 g	9.0%	0 g	90 mg	14 g	20%	28 g	
 Birthday Cake Cone	4 fl oz 65 g	140	2 g	15%	1.5 g	9%	0 g	95 mg	14 g	20%	28 g	
 Sour Cyclone Blue Raspberry	3.75 fl oz 79 g	90	0.5 g	5%	0 g	0.0%	0 g	30 mg	14 g	18%	21 g	
 Orange Cream Bar	2.5 fl oz 59 g	90	1 g	10%	0.5 g	5%	0 g	35 mg	16 g	27%	21 g	
 Fudge Frenzy	2.5 fl oz 63 g	110	0 g	0%	0 g	0.0%	0 g	65 mg	19 g	30%	25 g	
 Savagely Sour Blue	2.5 fl oz 70 g	60	0 g	0%	0 g	0%	0 g	10 mg	15 g	25%	14 g	 
 Savagely Sour Cherry	2.5 fl oz 70 g	60	0 g	0%	0 g	0.0%	0 g	10 mg	15 g	25%	14 g	 
 Cotton Candy Twirl	2.5 fl oz 70 g	60	0 g	0%	0 g	0%	0 g	10 mg	15 g	25%	14 g	 
 Cherry Polar Pole	2.75 fl oz 45 g	70	.5 g	7%	0 g	0.0%	0 g	15 mg	13 g	29%	16 g	
 Van, and Van/Choc ice cream in Plastic Cup	3 fl oz 50 g	80	1 g	11%	0.5 g	6%	0 g	45 mg	12 g	24%	17 g	



**Velvet Ice Cream**  
800-589-5000

[www.richicecream.com](http://www.richicecream.com)