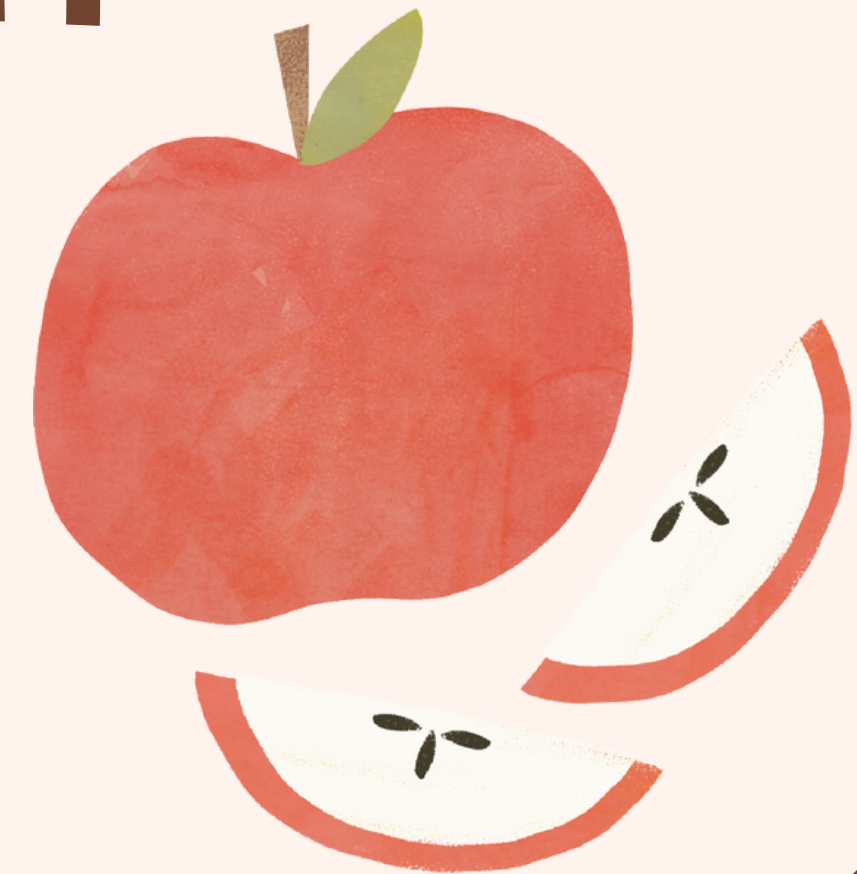


Lesson 01



# Career Development & Growth



KAITLIN FRAER, SNS  
MDSNA EDUCATION CHAIR



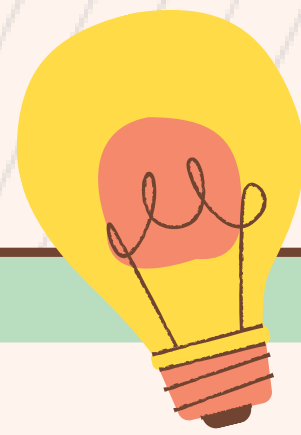
# How can I grow my career?

**Professional Development**

**Awards & Recognition**

**Certification & Credentialing**





# What are the standards?



Menu Planning  
Nutrition Education  
General Nutrition

1000 - Nutrition

Food Production  
Serving Food  
Cashier and Point of Service  
Purchasing & Procurement  
Receiving & Storage  
HACCP

2000 - Operations

FARMS  
Program Management  
Financial Management  
Human Resources & Staff Training  
Facilities & Equipment Planning

3000 - Administration

Communications & Marketing  
Promoting the CN Program  
Develop Communication Skills


4000- Communications & Marketing



# Available Resources

SNA 

SCHOOL  
NUTRITION  
ASSOCIATION

ICN 

INSTITUTE OF  
CHILD  
NUTRITION

USDA 

USDA  
PROFESSIONAL  
STANDARDS  
TRAINING  
DATABASE

FNS OFFICE OF  
FOOD SAFETY

**more are available, too!**

# Don't forget...



	Key Area/Code	Hours Approved CEUs Earned	Check (✓) each attended
<b>FRIDAY OCTOBER 21, 2022</b>			
MdSNA Leadership Conference <b>(by invitation only)</b>	Key Area 3400	2.5	
Exhibits (max 1 CEU for exhibits may be claimed)	Key Area 2400	1.0	
<b>SATURDAY OCTOBER 22, 2022</b>			
<b>Opening General Session</b>			
Keynote – The Stress Club: Take Your Power Back	Key Area 3450	0.75	
<b>Sessions I &amp; III 11:00 a.m. &amp; 1:15 p.m. (Choose One)</b>			
Adverse Childhood Experiences & Food Insecurity	Key Area 4110	1.0	
Spice It Up! Enhancing Your Menus <u>With</u> Fresh Ideas	Key Area 2110	1.0	
What to Expect During the Administrative Review	Key Area 3260	1.0	
Cafeteria <u>As</u> A Classroom: Marketing Healthy Options	Key Area 4110	1.0	
Romaine Calm & Carry On	Key Area 1170	1.0	
<b>Sessions II &amp; IV 12:15 p.m. &amp; 2:30 p.m. (Choose One)</b>			
Spirits Up! Appreciation & Motivation <u>For</u> Staff	Key Area 3440	1.0	
Promoting Healthy Eating on the Service Line	Key Area 4130	1.0	
Food Allergies	Key Area 1160	1.0	
Cafeteria <u>As</u> A Classroom: Farm to School & School Gardens	Key Area 1000	1.0	
The Stress Club: Take Your Power Back	Key Area 3450	1.0	
<b>Total CEUs</b>			

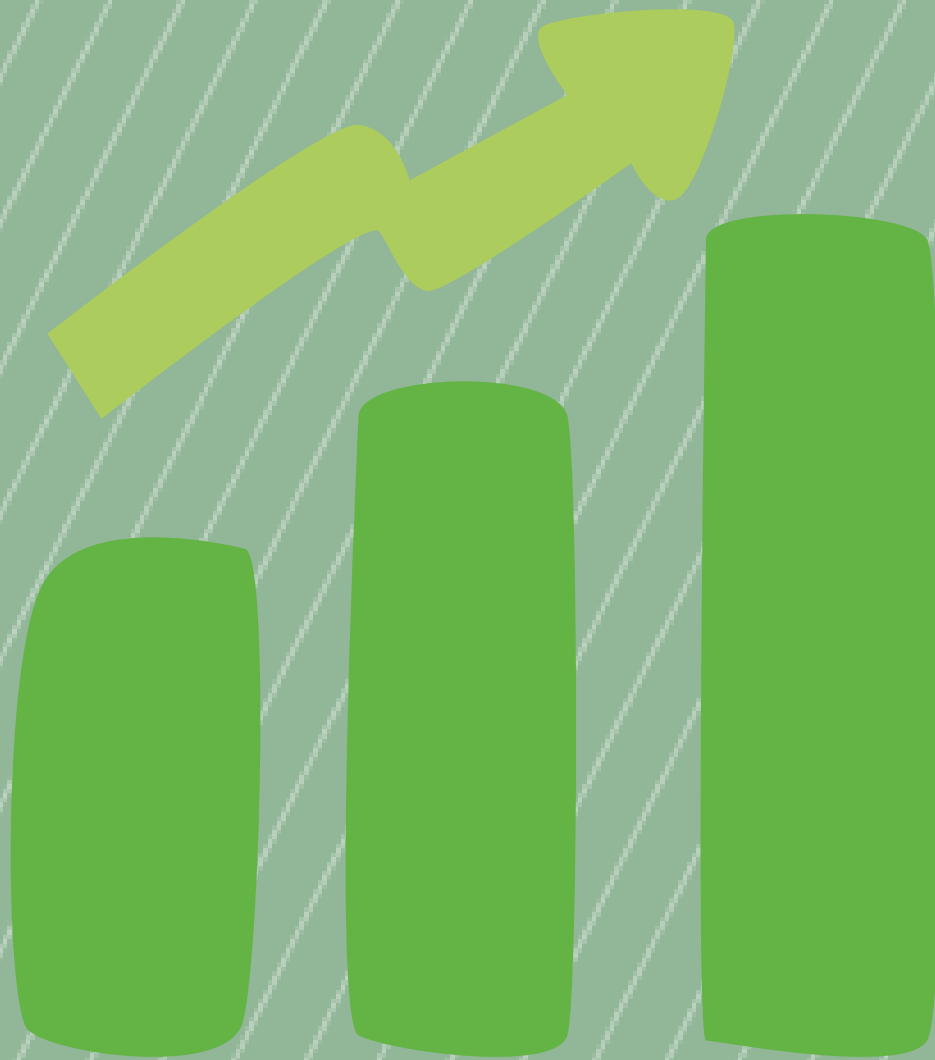




# Q Certificates & Credentialing

## Earning Your Certificate in School Nutrition will:

- Provide a career ladder you can use to advance in the field
- Add credibility to your position and to your school's program
- Enhance your professional image with supervisors, parents, and administrators
- Help you stay current on the latest issues and solutions related to your job



# Q Certificates & Credentialing



## Certification VS Credentialing

**Certifications** - 4 Levels - Varying needs for professional development, but once the requirements are met, submit the application & pay the fee and you've got it!

**Credentials** - Generally for central office staff, but anyone can study and apply. Challenging program & exam.





## Awards & Recognition



Manager of the Year

Employee of the Year

Rhonda Motley Gold Success Award

Innovation Award

[National Awards & Scholarships](#)



# Questions? Suggestions?

HAVE A GREAT TIME AT THE REST OF THE  
CONVENTION!

[KMFRAER@SMCPS.ORG](mailto:KMFRAER@SMCPS.ORG)